

EACCR – EDCTP2

Neglected Infectious Diseases
(NID)- Emerging and re
emerging diseases Node



Objective of NID Node

- To manage and establish the needed facilities to conduct clinical trials on neglected, emerging and re-emerging disease that burden the region

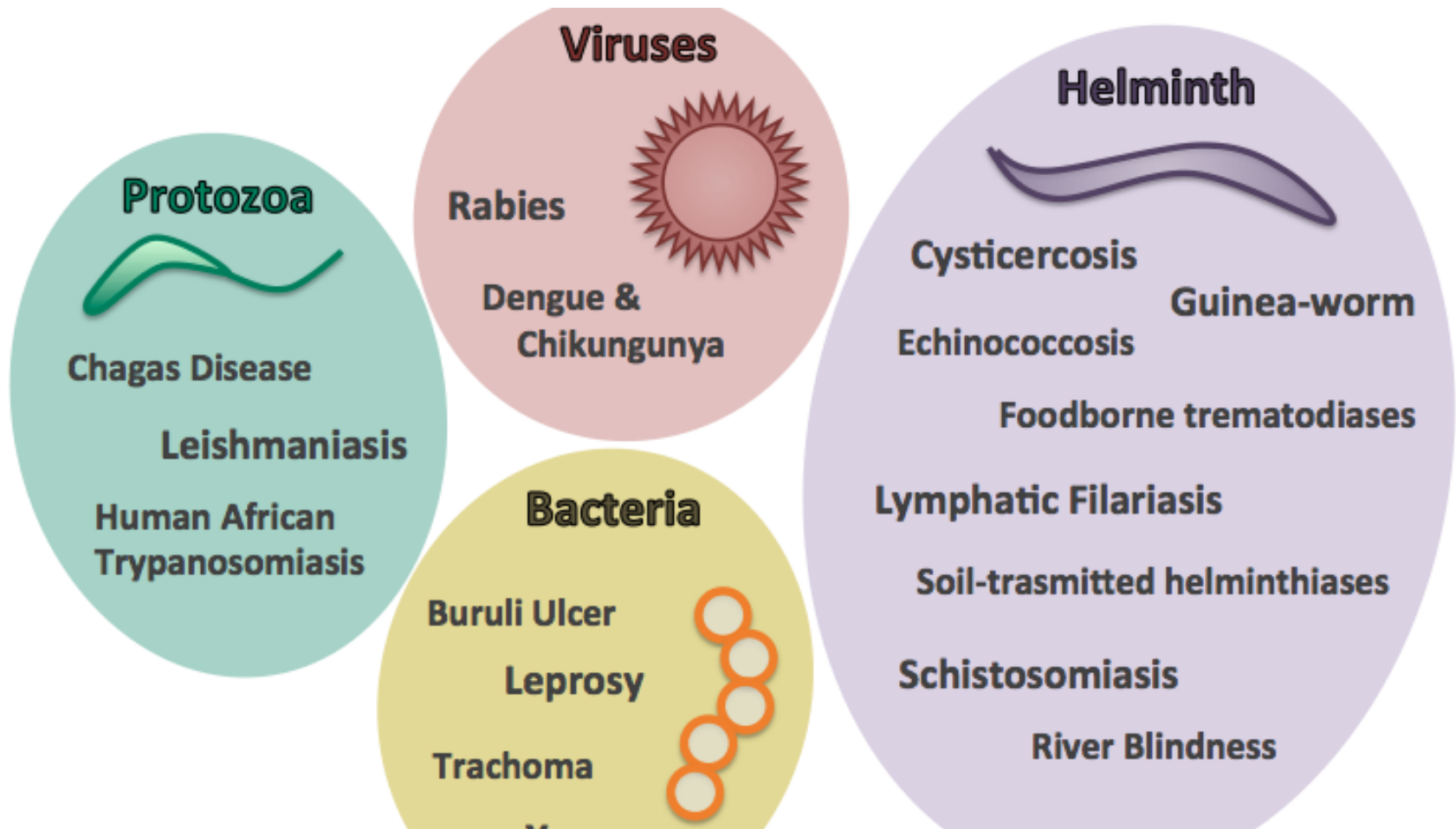
1 BILLION



1
IN
6

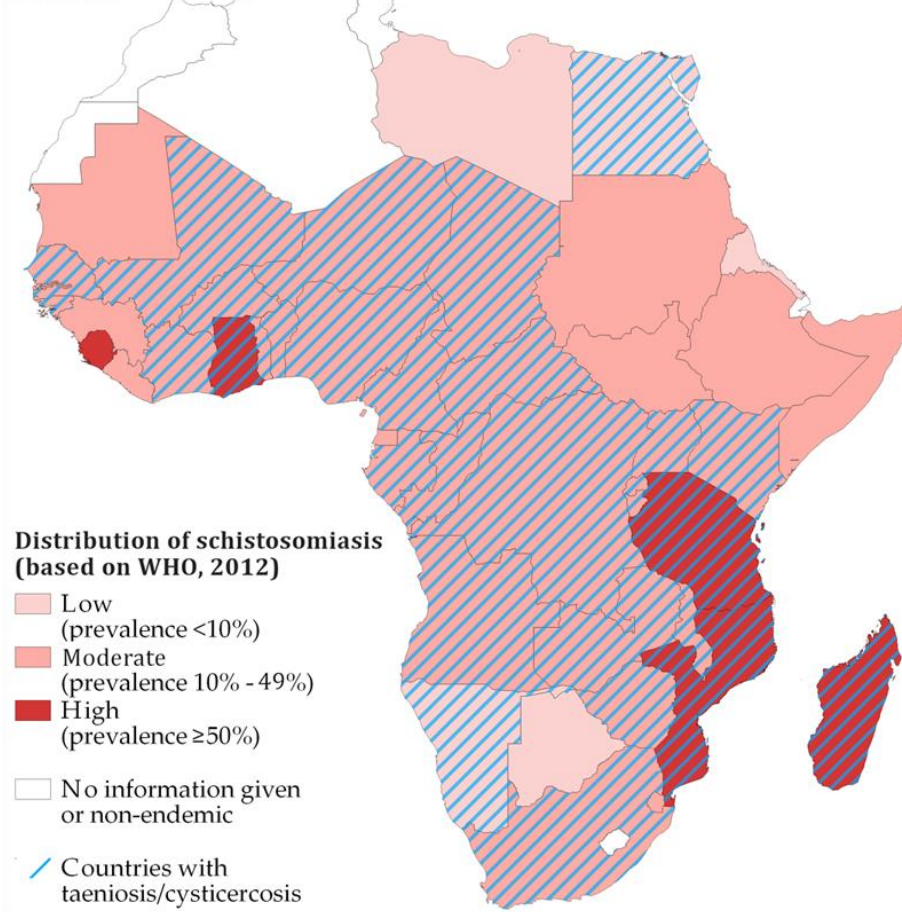
SUFFER FROM A
NEGLECTED TROPICAL

NIDs

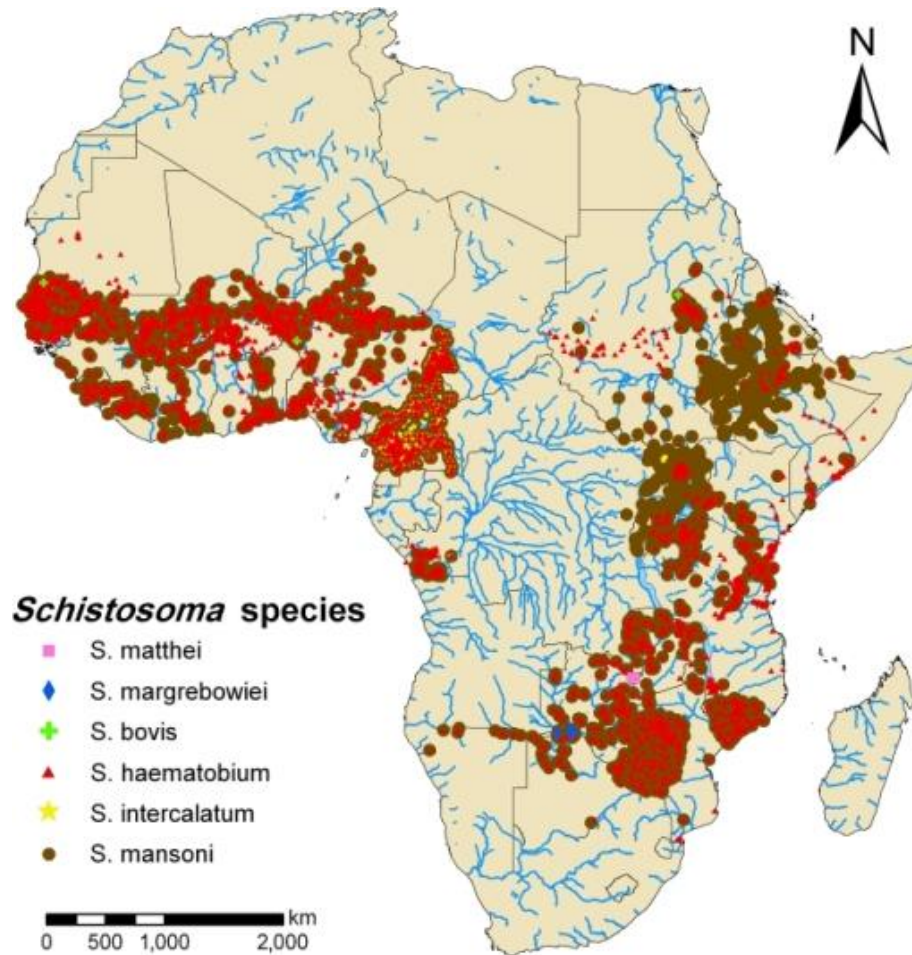


Prevalence of Schistosomiasis

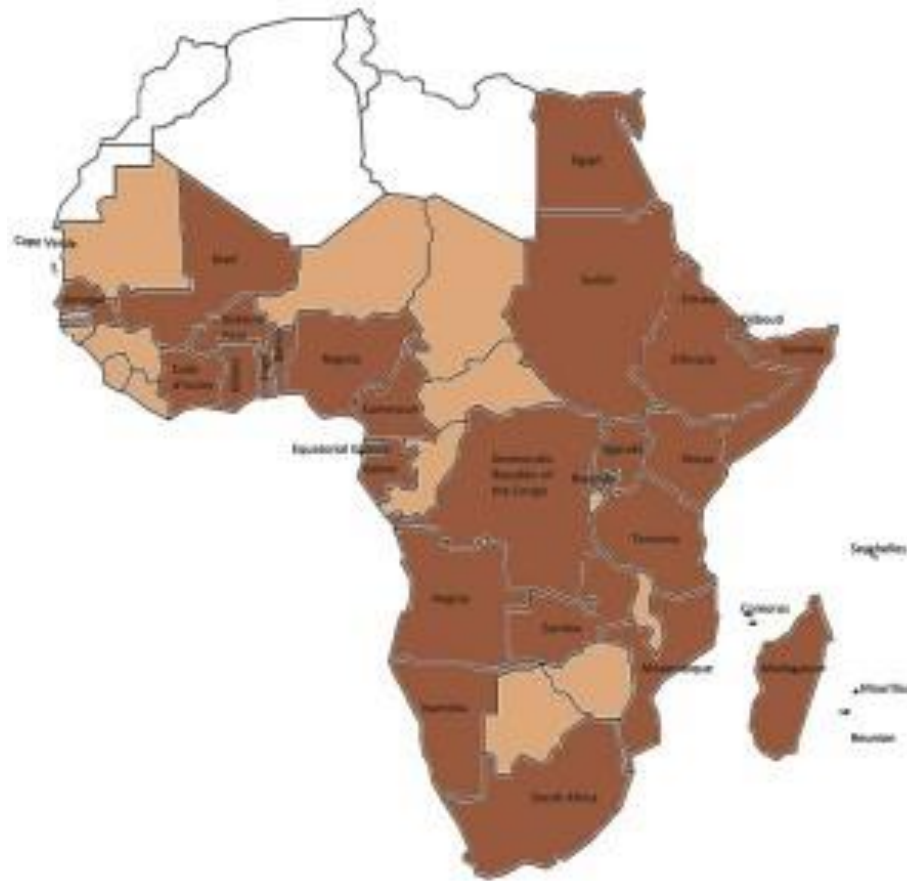
Braae, U.C., Saarnak, C., Mukaratirwa, S., Devleeschauwer, B., Magnussen, P., Johansen, M.V., 2015. *Toenia solium* taeniosis/cysticercosis and the co-distribution with schistosomiasis in Africa. *Parasit. Vectors.* 8, 323.



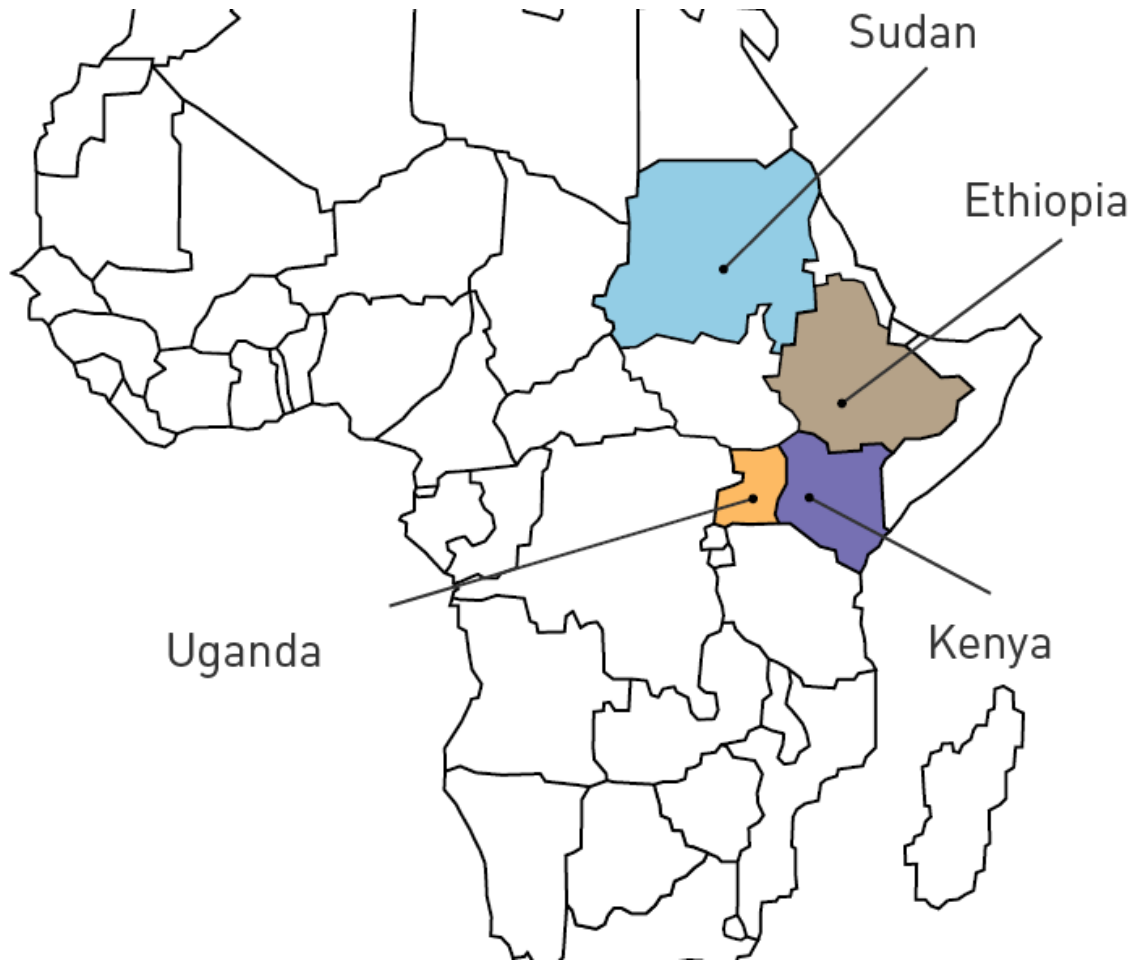
Prevalence of Schistosomiasis



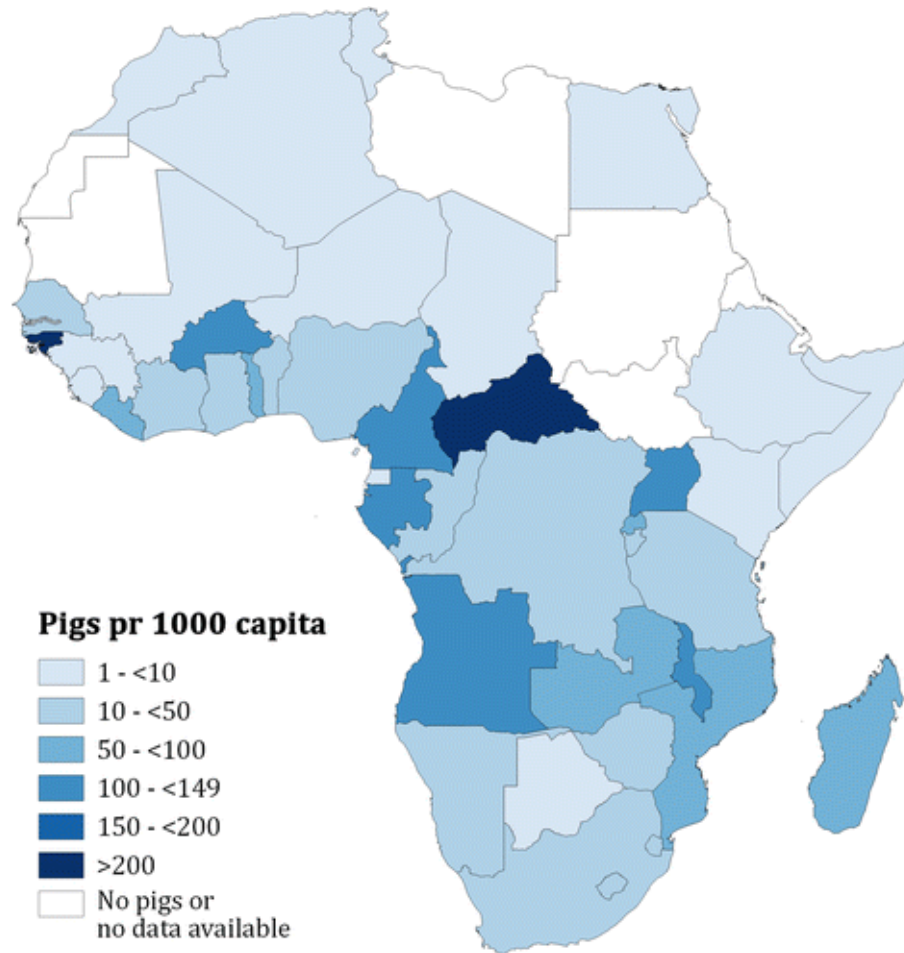
Dengue burden Africa



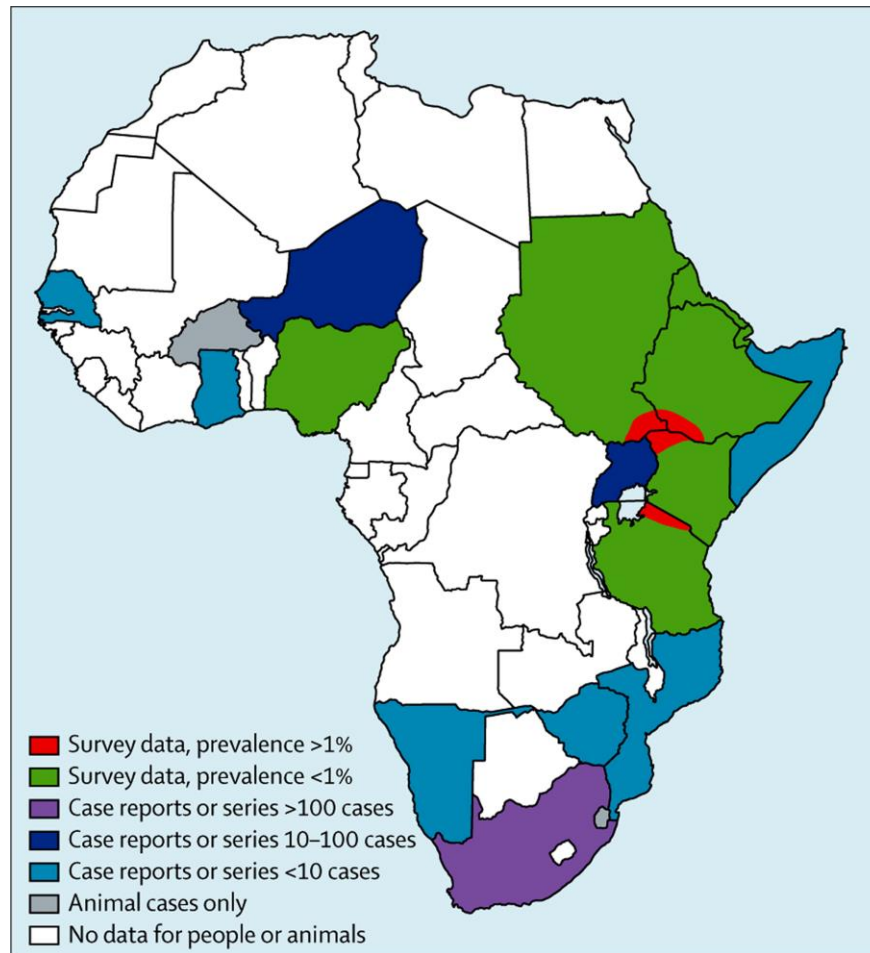
Prevalence of Leishmaniasis



Prevalence of Cycticercosis



Prevalence of Echinococcosis



NID activities on selected diseases

Diseases	Activities
Schistosomiasis	Collection of epidemiological data and Development of GIS maps of endemic areas
Leishmaniasis	Evaluation of new diagnostics and GIS mapping of VL and CL endemic areas
Dengue	Measure prevalence and transmission of Dengue, and identification of hot spots
Cytocercosis	Evaluation of new detection tools.
Echinococcosis	Measurement of prevalence, epidemiology, genotypes and diagnosis Conduct surveillance, develop GIS maps
Ebola and Zika	Review published literature, develop GIS maps

NID first year deliverables

Activity	Deliverable	Duration
Long term Training	M.Sc. Training of 5 students	First 24 months
Short term training	Molecular diagnostic course 20 participants	First 12 months
Collection and review of historical data	Information synthesis and meta analysis of data	First 12 months
Identification of hot spots	Start development of GIS Maps	First 12 months
Proposal writing and submission	Joint application of proposals	First 12 months
Networking within EACCR	Joint training, share facilities and experience and research on co-infection	First 12 months
Networking with other programs	Share training experience and facilities	First 12 months

-

Thank Your